



ASOMUTUOS

Asociación Nacional de Fondos Mutuos de Inversión

CIFRAS CONSOLIDADAS

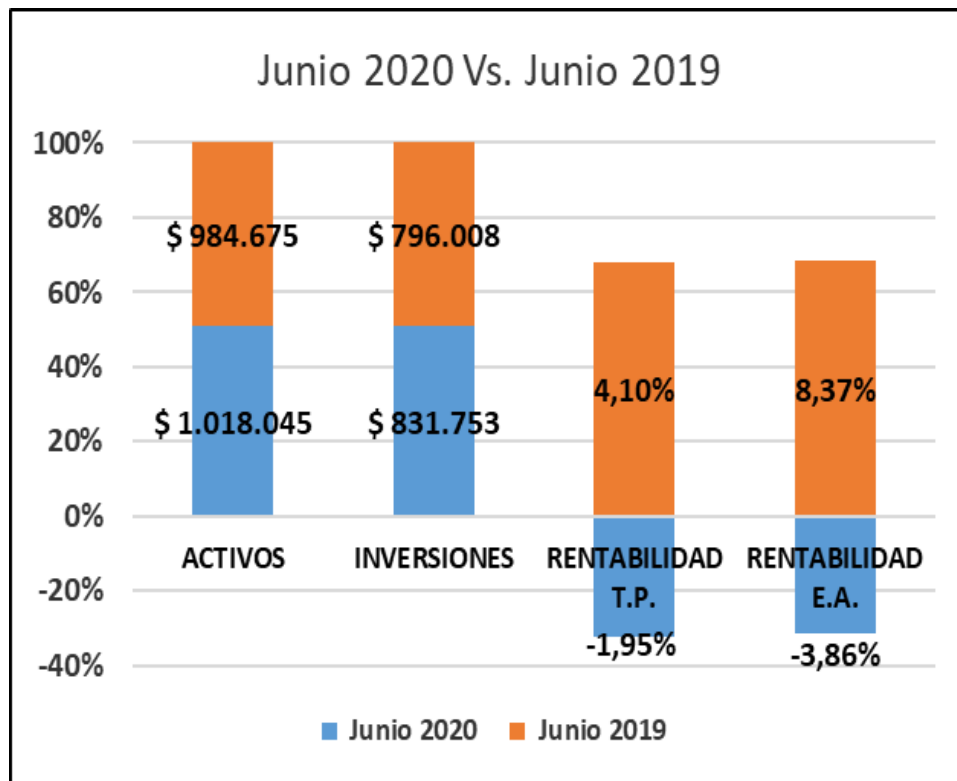
JUNIO 2020

(Valores Expresados en Millones)

| Junio 2020 | | |
|---------------|-------------------|--------------|
| FMI Vigilados | | |
| 1 | ACTIVOS | \$ 1.018.045 |
| 2 | INVERSIONES | \$ 831.753 |
| 3 | RENTABILIDAD T.P. | -1,95% |
| 4 | RENTABILIDAD E.A. | -3,86% |

| Junio 2019 | | |
|---------------|-------------------|------------|
| FMI Vigilados | | |
| 1 | ACTIVOS | \$ 984.675 |
| 2 | INVERSIONES | \$ 796.008 |
| 3 | RENTABILIDAD T.P. | 4,10% |
| 4 | RENTABILIDAD E.A. | 8,37% |

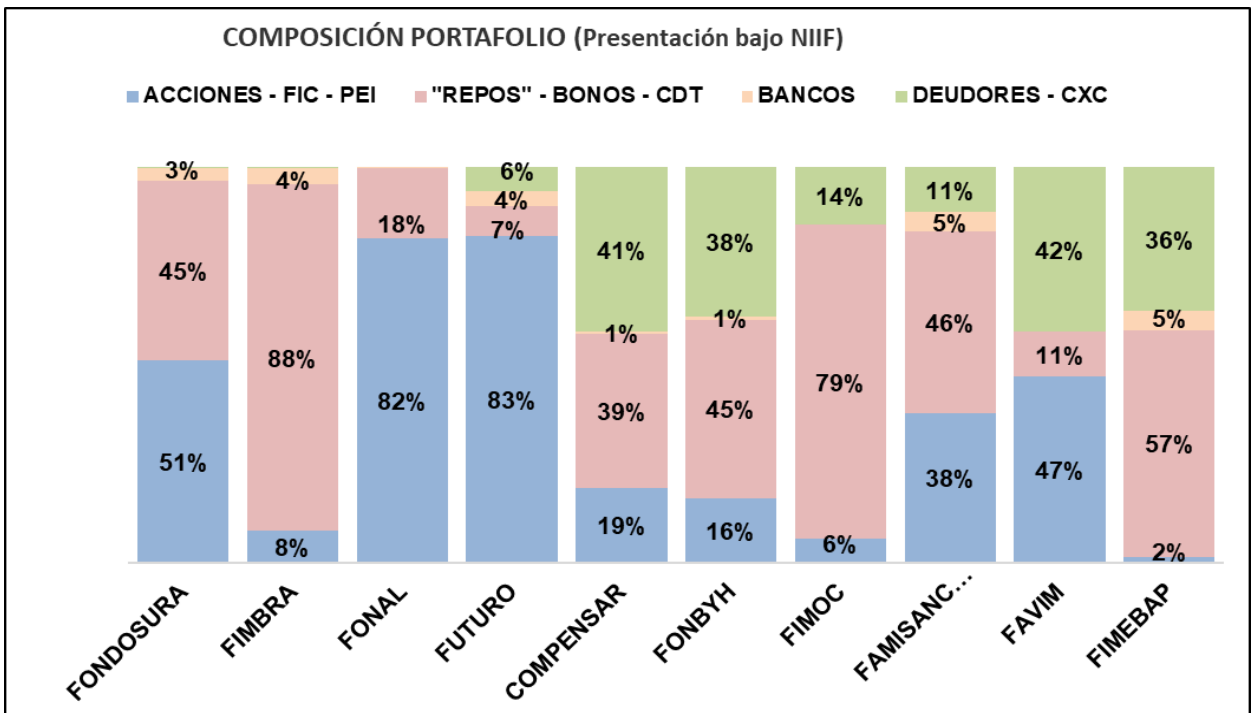
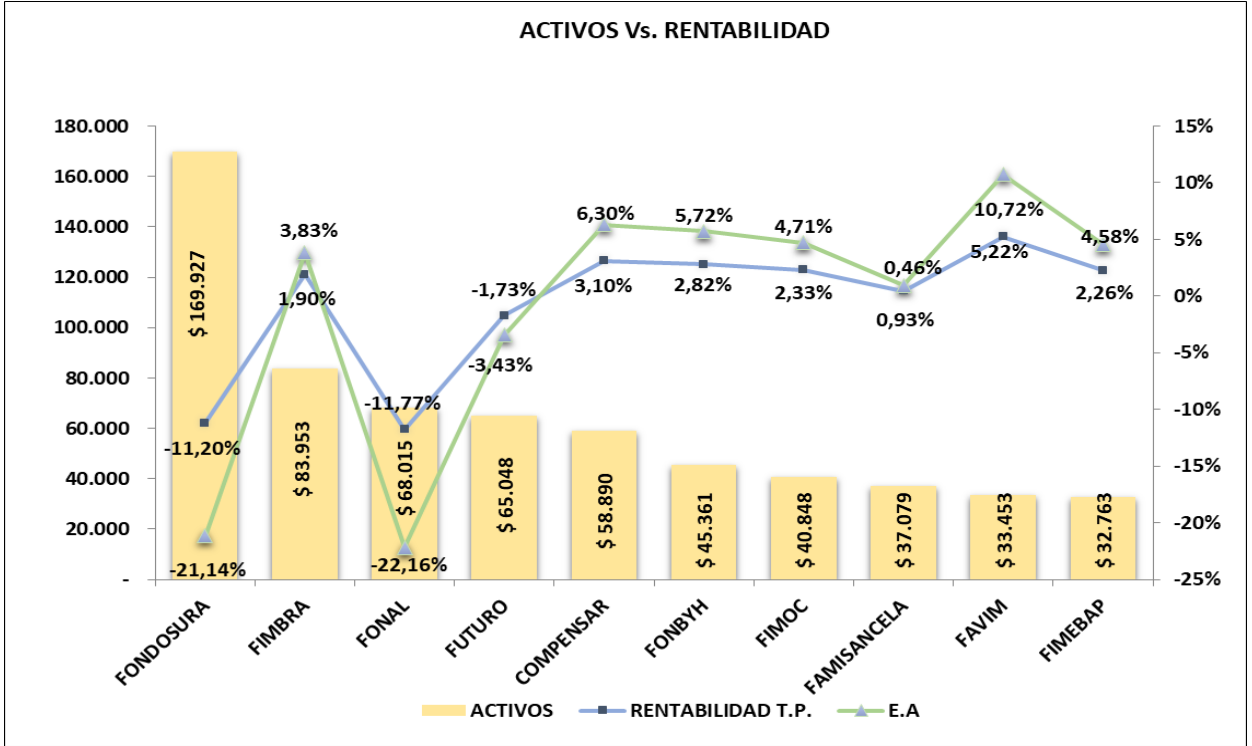
| Variaciones Junio 2020 Vs. Junio 2019 | |
|---------------------------------------|----------|
| FMI Vigilados | |
| ACTIVOS | 3,39% |
| INVERSIONES | 4,49% |
| RENTABILIDAD T.P. | -147,48% |
| RENTABILIDAD E.A. | -146,07% |





TOP 10 FMI's

| | Activo | Ganancia | R.O.A. |
|-------------|------------|------------|---------|
| FONDOSURA | 169.927,16 | -19.038,55 | -21,14% |
| FIMBRA | 83.953,26 | 1.546,46 | 3,83% |
| FONAL | 68.015,36 | -8.243,48 | -22,16% |
| FUTURO | 65.048,16 | -1.097,07 | -3,43% |
| COMPENSAR | 58.889,70 | 1.736,94 | 6,30% |
| FONBYH | 45.361,42 | 1.220,70 | 5,72% |
| FIMOC | 40.847,56 | 932,31 | 3,71% |
| FAMISANCELA | 37.079,22 | 163,90 | 0,98% |
| FAVIM | 33.453,13 | 1.653,69 | 10,72% |
| FIMEBAP | 32.762,50 | 723,00 | 4,58% |



| FMI's Comparativo por Nivel de Activos 2020 Vs. 2019 | | | | | |
|--|--------------|--------------|------------|------------|---------|
| # | FMI | CIUDAD | 2020 | 2019 | Var. % |
| 1 | FONDOSURA | MEDELLIN | \$ 169.927 | \$ 170.178 | -0,15% |
| 2 | FIMBRA | BOGOTA | \$ 83.953 | \$ 79.207 | 5,99% |
| 3 | FONAL | MEDELLIN | \$ 68.015 | \$ 72.039 | -5,59% |
| 4 | FUTURO | MEDELLIN | \$ 65.048 | \$ 61.611 | 5,58% |
| 5 | COMPENSAR | BOGOTA | \$ 58.890 | \$ 53.168 | 10,76% |
| 6 | FONBYH | BOGOTA | \$ 45.361 | \$ 41.274 | 9,90% |
| 7 | FIMOC | BOGOTA | \$ 40.848 | \$ 39.198 | 4,21% |
| 8 | FAMISANCELA | MEDELLIN | \$ 37.079 | \$ 33.600 | 10,35% |
| 9 | FAVIM | BARRANQUILLA | \$ 33.453 | \$ 29.874 | 11,98% |
| 10 | FIMEBAP | BOGOTA | \$ 32.763 | \$ 31.108 | 5,32% |
| 11 | PETROCAJA | BOGOTA | \$ 29.792 | \$ 40.658 | -26,72% |
| 12 | FIA | CALI | \$ 28.574 | \$ 23.644 | 20,85% |
| 13 | FOMUNE | MEDELLIN | \$ 26.627 | \$ 25.715 | 3,55% |
| 14 | CRC | CALI | \$ 25.228 | \$ 21.668 | 16,43% |
| 15 | FONNOEL | MEDELLIN | \$ 23.121 | \$ 22.615 | 2,24% |
| 16 | FOMIHOCOL | BOGOTA | \$ 21.786 | \$ 17.838 | 22,13% |
| 17 | FOMIL | MEDELLIN | \$ 20.160 | \$ 19.391 | 3,97% |
| 18 | PETROMECL | BOGOTA | \$ 19.813 | \$ 18.407 | 7,64% |
| 19 | COMPARTIR | BOGOTA | \$ 18.471 | \$ 16.095 | 14,77% |
| 20 | DESTINAR | BOGOTA | \$ 17.687 | \$ 19.324 | -8,47% |
| 21 | MI FUTURO | CALI | \$ 16.126 | \$ 14.424 | 11,80% |
| 22 | FECOM | BOGOTA | \$ 14.639 | \$ 13.832 | 5,83% |
| 23 | COLMOTORES | BOGOTA | \$ 14.066 | \$ 17.585 | -20,01% |
| 24 | FONCARNICOS | MEDELLIN | \$ 11.850 | \$ 11.161 | 6,18% |
| 25 | ESTELAR | CALI | \$ 11.802 | \$ 12.442 | -5,15% |
| 26 | FONCOLTABACO | MEDELLIN | \$ 11.185 | \$ 15.807 | -29,24% |
| 27 | FONDOBANTEQ | BOGOTA | \$ 10.466 | \$ 8.598 | 21,73% |
| 28 | FIMPREVI | BOGOTA | \$ 9.390 | \$ 7.560 | 24,21% |
| 29 | FONAMERICAS | MEDELLIN | \$ 7.747 | \$ 6.822 | 13,56% |
| 30 | FINDAHORRO | BOGOTA | \$ 7.543 | \$ 6.856 | 10,01% |
| 31 | FONBOLSA | MEDELLIN | \$ 5.797 | \$ 4.084 | 41,93% |
| 32 | FOMULEG | BOGOTA | \$ 5.676 | \$ 5.840 | -2,80% |
| 33 | UNIFONDO | BOGOTA | \$ 5.557 | \$ 5.501 | 1,02% |
| 34 | FONCCOMED | MEDELLIN | \$ 5.271 | \$ 4.837 | 8,96% |
| 35 | AVANZAR | MEDELLIN | \$ 4.923 | \$ 4.650 | 5,89% |
| 36 | INVERLOC | BOGOTA | \$ 4.708 | \$ 4.202 | 12,05% |
| 37 | COCA - COLA | BOGOTA | \$ 4.704 | \$ 3.863 | 21,76% |

| FMI's Comparativo por Rentabilidad en Activos 2020 Vs. 2019 | | | | | | | | |
|---|--------------|--------------|-------------------|--------|----------|------------------|--------|----------|
| # | FMI | CIUDAD | Rentabilidad T.P. | | | Rentabilidad E.A | | |
| | | | 2020 | 2019 | Var. | 2020 | 2019 | Var. |
| 1 | FAVIM | BARRANQUILLA | 5,22% | 8,19% | -36,26% | 10,72% | 17,06% | -37,17% |
| 2 | FIMPREVI | BOGOTA | 4,63% | 2,56% | 81,16% | 9,47% | 5,18% | 83,02% |
| 3 | FIA | CALI | 3,58% | 3,54% | 1,11% | 7,28% | 7,20% | 1,13% |
| 4 | FONAMERICAS | MEDELLIN | 3,37% | 5,90% | -42,86% | 6,86% | 12,15% | -43,56% |
| 5 | FONDOBANTEQ | BOGOTA | 3,26% | 2,86% | 14,06% | 6,63% | 5,81% | 14,29% |
| 6 | COMPENSAR | BOGOTA | 3,10% | 3,75% | -17,37% | 6,30% | 7,64% | -17,63% |
| 7 | PETROMECL | BOGOTA | 3,05% | 2,83% | 7,94% | 6,20% | 5,73% | 8,06% |
| 8 | FOMIHOCOL | BOGOTA | 2,82% | 2,17% | 29,89% | 5,72% | 4,39% | 30,31% |
| 9 | FONBYH | BOGOTA | 2,82% | 3,77% | -25,23% | 5,72% | 7,68% | -25,58% |
| 10 | CRC | CALI | 2,67% | 2,93% | -8,83% | 5,41% | 5,94% | -8,95% |
| 11 | FECOM | BOGOTA | 2,57% | 1,99% | 29,26% | 5,21% | 4,02% | 29,63% |
| 12 | MI FUTURO | CALI | 2,54% | 4,96% | -48,90% | 5,13% | 10,17% | -49,51% |
| 13 | INVERLOC | BOGOTA | 2,45% | 1,82% | 34,84% | 4,96% | 3,66% | 35,27% |
| 14 | PETROCAJA | BOGOTA | 2,40% | 2,81% | -14,77% | 4,85% | 5,71% | -14,94% |
| 15 | FIMOC | BOGOTA | 2,33% | 3,08% | -24,35% | 4,71% | 6,25% | -24,62% |
| 16 | FIMEBAP | BOGOTA | 2,26% | 2,44% | -7,09% | 4,58% | 4,93% | -7,17% |
| 17 | FINDAHORRO | BOGOTA | 2,20% | 3,01% | -27,02% | 4,44% | 6,11% | -27,32% |
| 18 | COLMOTORES | BOGOTA | 2,10% | 3,62% | -41,82% | 4,25% | 7,36% | -42,25% |
| 19 | FIMBRA | BOGOTA | 1,90% | 2,07% | -8,54% | 3,83% | 4,19% | -8,62% |
| 20 | COCA - COLA | BOGOTA | 1,72% | 1,02% | 68,12% | 3,47% | 2,06% | 68,70% |
| 21 | UNIFONDO | BOGOTA | 1,54% | 0,97% | 58,51% | 3,10% | 1,95% | 58,95% |
| 22 | FONBOLSA | BOGOTA | 1,45% | 1,33% | 8,94% | 2,92% | 2,68% | 9,00% |
| 23 | FOMULEG | BOGOTA | 0,96% | 1,45% | -33,97% | 1,93% | 2,92% | -34,13% |
| 24 | COMPARTIR | BOGOTA | 0,76% | 3,47% | -78,04% | 1,53% | 7,06% | -78,33% |
| 25 | FAMISANCELA | MEDELLIN | 0,46% | 4,33% | -89,28% | 0,93% | 8,84% | -89,48% |
| 26 | ESTELAR | CALI | -0,39% | 3,89% | -110,09% | -0,78% | 7,93% | -109,88% |
| 27 | DESTINAR | BOGOTA | -0,73% | -0,86% | -15,28% | -1,46% | -1,72% | -15,22% |
| 28 | FUTURO | MEDELLIN | -1,73% | 5,33% | -132,48% | -3,43% | 10,95% | -131,36% |
| 29 | FONCCOMED | MEDELLIN | -2,00% | 4,56% | -143,86% | -3,96% | 9,32% | -142,45% |
| 30 | FOMIL | MEDELLIN | -3,38% | 4,25% | -179,52% | -6,64% | 8,68% | -176,55% |
| 31 | FONNOEL | MEDELLIN | -3,42% | 1,06% | -423,67% | -6,73% | 2,13% | -416,46% |
| 32 | FONCARNICOS | MEDELLIN | -3,51% | 0,99% | -453,29% | -6,90% | 2,00% | -445,36% |
| 33 | FONCOLTABACO | MEDELLIN | -3,89% | 3,91% | -199,52% | -7,63% | 7,98% | -195,71% |
| 34 | FOMUNE | MEDELLIN | -7,95% | 6,29% | -226,35% | -15,27% | 12,98% | -217,63% |
| 35 | FONDOSURA | MEDELLIN | -11,20% | 6,03% | -285,60% | -21,14% | 12,43% | -270,08% |
| 36 | FONAL | MEDELLIN | -11,77% | 6,77% | -273,92% | -22,16% | 14,00% | -258,32% |
| 37 | AVANZAR | MEDELLIN | -12,93% | 5,23% | -347,36% | -24,20% | 10,73% | -325,47% |

Comparativo Mayo Vs. Junio 2020

| FONDOS | CIUDAD | MAYO | | | JUNIO | | | Var Rent mes | Var Activos mes |
|--------------|--------------|------------|-----------|---------|------------|-----------|---------|--------------|-----------------|
| | | ACTIVO | RENT ACUM | % ea | ACTIVO | RENT ACUM | % ea | | |
| FONBOLSA | BOGOTA | \$ 5.520 | 46,7 | 2,04% | \$ 5.797 | 71,67 | 2,49% | 53,47% | 5,00% |
| COCA - COLA | BOGOTA | \$ 4.544 | 53,31 | 2,84% | \$ 4.704 | 73,7 | 3,16% | 38,25% | 3,52% |
| FIA | CALI | \$ 27.606 | 749,9 | 6,64% | \$ 28.574 | 933,74 | 6,64% | 24,52% | 3,51% |
| AVANZAR | MEDELLIN | \$ 4.773 | -659,38 | -30,01% | \$ 4.923 | -619,1 | -23,57% | 6,11% | 3,15% |
| COMPARTIR | BOGOTA | \$ 17.971 | 14,44 | 0,19% | \$ 18.471 | 131,63 | 1,43% | 811,57% | 2,78% |
| FINDAHORRO | BOGOTA | \$ 7.343 | 138,97 | 4,60% | \$ 7.543 | 158,14 | 4,24% | 13,79% | 2,71% |
| FONDOBANTEQ | BOGOTA | \$ 10.190 | 247,43 | 5,93% | \$ 10.466 | 311,13 | 6,03% | 25,74% | 2,71% |
| FIMBRA | BOGOTA | \$ 81.808 | 2794,89 | 8,40% | \$ 83.953 | 1546,46 | 3,72% | -44,67% | 2,62% |
| FOMIHOCOL | BOGOTA | \$ 21.260 | 457,59 | 5,24% | \$ 21.786 | 558,94 | 5,20% | 22,15% | 2,47% |
| PETROMECL | BOGOTA | \$ 19.355 | 462,32 | 5,83% | \$ 19.813 | 583,07 | 5,97% | 26,12% | 2,37% |
| FAMISANCELA | MEDELLIN | \$ 36.247 | -55,45 | -0,37% | \$ 37.079 | 163,9 | 0,89% | 395,58% | 2,30% |
| FIMPREVI | BOGOTA | \$ 9.179 | 325,58 | 8,72% | \$ 9.390 | 392,3 | 8,53% | 20,49% | 2,30% |
| FECOM | BOGOTA | \$ 14.319 | 293,95 | 5,00% | \$ 14.639 | 366,3 | 5,07% | 24,61% | 2,23% |
| FUTURO | MEDELLIN | \$ 63.690 | -1409,43 | -5,23% | \$ 65.048 | -1097,07 | -3,34% | 22,16% | 2,13% |
| FONDOSURA | MEDELLIN | \$ 166.646 | -20421,49 | -26,93% | \$ 169.927 | -19038,55 | -21,15% | 6,77% | 1,97% |
| FIMEBAP | BOGOTA | \$ 32.170 | 613,14 | 4,64% | \$ 32.763 | 723 | 4,46% | 17,92% | 1,84% |
| FOMUNE | MEDELLIN | \$ 26.176 | -2302,82 | -19,83% | \$ 26.627 | -2080,46 | -15,02% | 9,66% | 1,72% |
| COMPENSAR | BOGOTA | \$ 58.032 | 1453,9 | 6,12% | \$ 58.890 | 1736,94 | 5,99% | 19,47% | 1,48% |
| CRC | CALI | \$ 24.894 | 487,73 | 4,77% | \$ 25.228 | 625,56 | 5,02% | 28,26% | 1,34% |
| FONCOLTABACO | MEDELLIN | \$ 11.060 | -544,1 | -11,40% | \$ 11.185 | -525,39 | -9,17% | 3,44% | 1,13% |
| FONCCOMED | MEDELLIN | \$ 5.216 | -127,13 | -5,75% | \$ 5.271 | -101 | -3,80% | 20,55% | 1,05% |
| FAVIM | BARRANQUILLA | \$ 33.141 | 1267,24 | 9,42% | \$ 33.453 | 1653,69 | 10,13% | 30,50% | 0,94% |
| FONAMERICAS | MEDELLIN | \$ 7.682 | 207,36 | 6,60% | \$ 7.747 | 245,56 | 6,44% | 18,42% | 0,85% |
| FOMULEG | BOGOTA | \$ 5.632 | 39,92 | 1,71% | \$ 5.676 | 55,18 | 1,95% | 38,23% | 0,79% |
| FIMOC | BOGOTA | \$ 40.640 | 608,59 | 3,63% | \$ 40.848 | 932,31 | 4,62% | 53,19% | 0,51% |
| FONNOEL | MEDELLIN | \$ 23.004 | -975,89 | -9,88% | \$ 23.121 | -782,58 | -6,66% | 19,81% | 0,51% |
| FOMIL | MEDELLIN | \$ 20.138 | -839,33 | -9,71% | \$ 20.160 | -668,11 | -6,52% | 20,40% | 0,11% |
| FONAL | MEDELLIN | \$ 67.973 | -8768,16 | -28,21% | \$ 68.015 | -8243,48 | -22,77% | 5,98% | 0,06% |
| FONBYH | BOGOTA | \$ 45.361 | 1220,7 | 6,58% | \$ 45.361 | 1220,7 | 5,45% | 0,00% | 0,00% |
| INVERLOC | BOGOTA | \$ 4.726 | 81,05 | 4,17% | \$ 4.708 | 109,05 | 4,69% | 34,55% | -0,37% |
| UNIFONDO | BOGOTA | \$ 5.580 | 76,1 | 3,30% | \$ 5.557 | 84,99 | 3,08% | 11,68% | -0,41% |
| DESTINAR | BOGOTA | \$ 17.816 | -235,27 | -3,14% | \$ 17.687 | -135,44 | -1,53% | 42,43% | -0,72% |
| MI FUTURO | CALI | \$ 16.281 | 273,29 | 4,08% | \$ 16.126 | 387,27 | 4,86% | 41,71% | -0,95% |
| FONCARNICOS | MEDELLIN | \$ 12.060 | -515,18 | -9,95% | \$ 11.850 | -404,31 | -6,71% | 21,52% | -1,74% |
| PETROCAJA | BOGOTA | \$ 30.662 | 665,64 | 5,29% | \$ 29.792 | 844,58 | 5,75% | 26,88% | -2,84% |
| COLMOTORES | BOGOTA | \$ 14.787 | 275,55 | 4,53% | \$ 14.066 | 332,98 | 4,79% | 20,84% | -4,88% |
| ESTELAR | CALI | \$ 13.087 | -84,56 | -1,54% | \$ 11.802 | -47,56 | -0,80% | 43,76% | -9,82% |