



ASOMUTUOS

Asociación Nacional de Fondos Mutuos de Inversión

CIFRAS CONSOLIDADAS

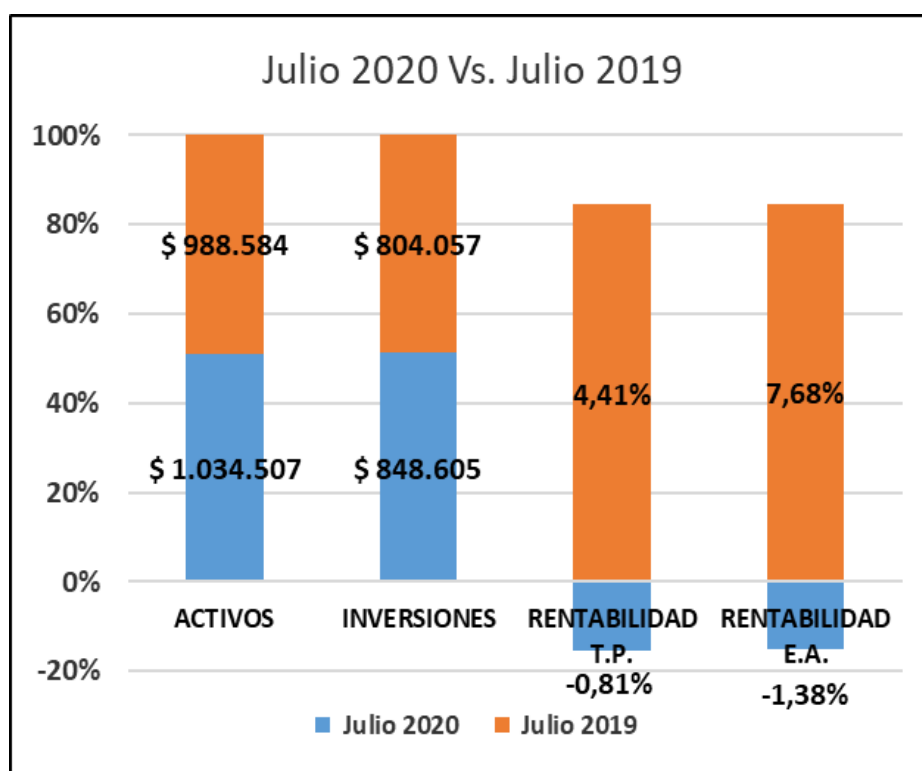
JULIO 2020

(Valores Expresados en Millones)

Julio 2020		
FMI Vigilados		
1	ACTIVOS	\$ 1.034.507
2	INVERSIONES	\$ 848.605
3	RENTABILIDAD T.P.	-0,81%
4	RENTABILIDAD E.A.	-1,38%

Julio 2019		
FMI Vigilados		
1	ACTIVOS	\$ 988.584
2	INVERSIONES	\$ 804.057
3	RENTABILIDAD T.P.	4,41%
4	RENTABILIDAD E.A.	7,68%

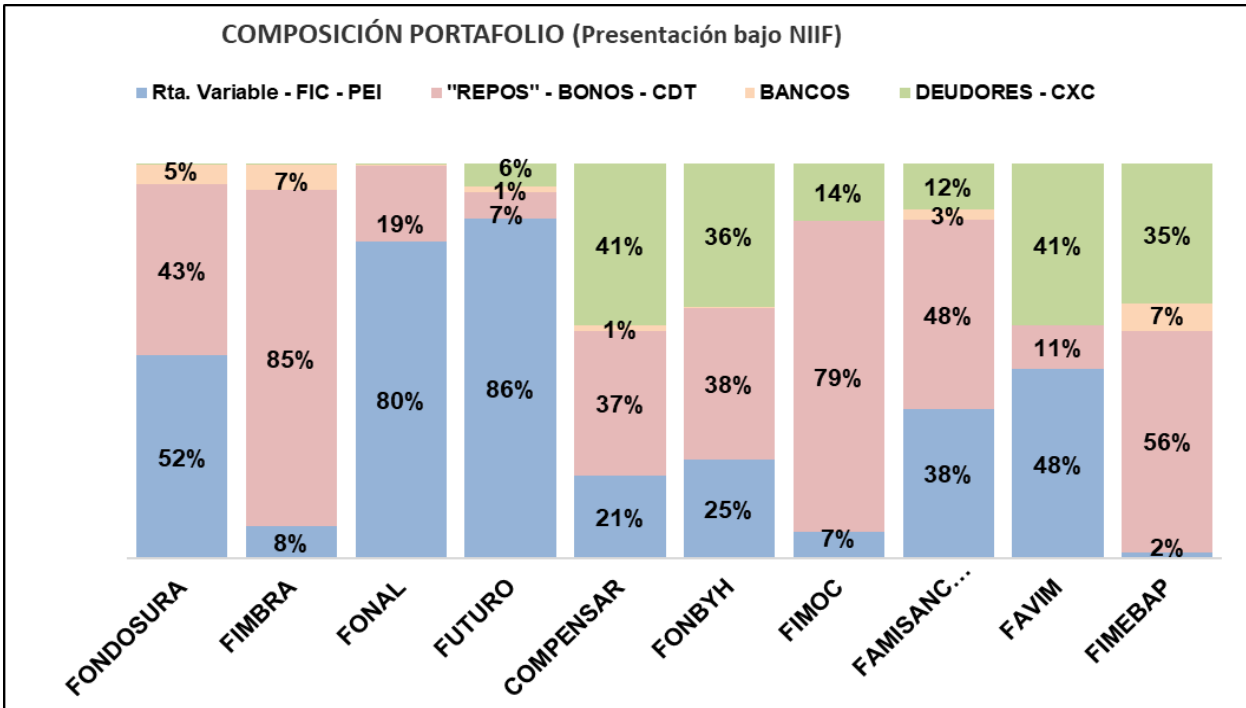
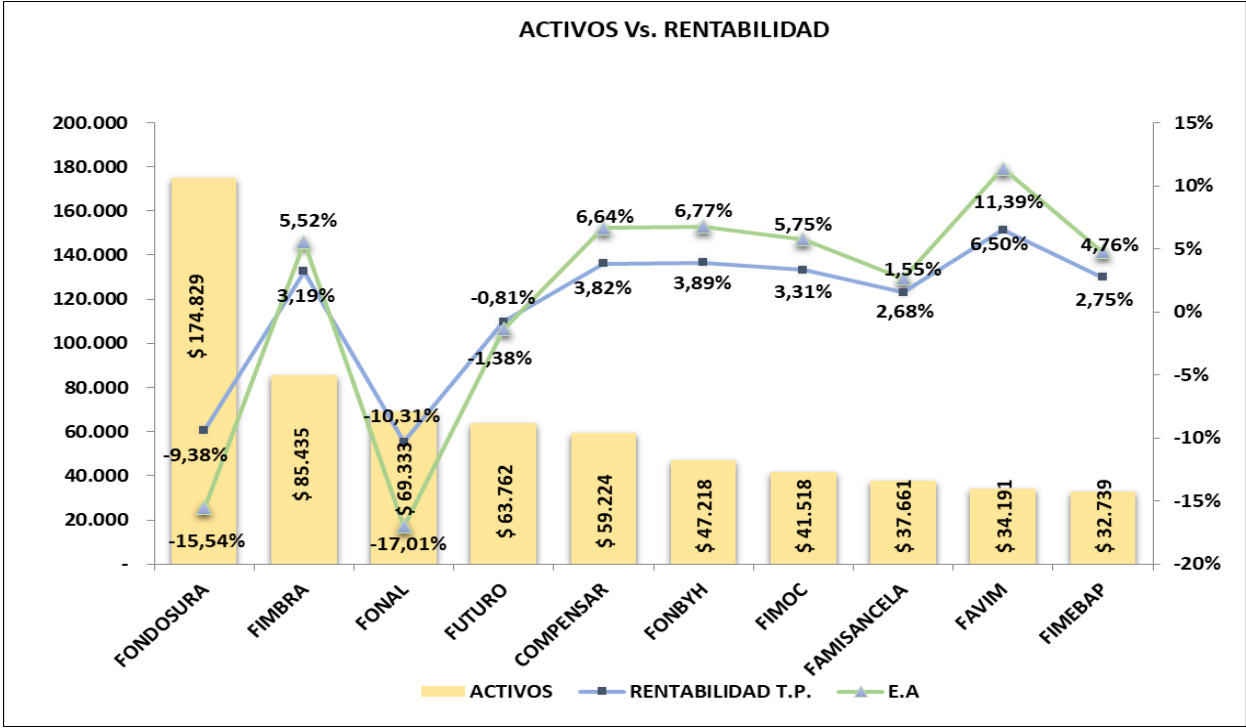
Variaciones Julio 2020 Vs. Julio 2019	
FMI Vigilados	
ACTIVOS	4,65%
INVERSIONES	5,54%
RENTABILIDAD T.P.	-118,33%
RENTABILIDAD E.A.	-118,00%





TOP 10 FMI's

FMI	Activo	Ganancia	R.O.A.
FONDOSURA	174.829,22	-16.248,16	-15,54%
FIMBRA	85.434,75	2.635,60	5,52%
FONAL	69.332,99	-7.282,49	-17,01%
FUTURO	63.761,83	-505,83	-1,38%
COMPENSAR	59.224,33	2.151,55	6,64%
FONBYH	47.217,66	1.725,76	6,77%
FIMOC	41.517,88	1.339,61	5,75%
FAMISANCELA	37.661,10	555,21	2,68%
FAVIM	34.191,07	2.075,36	11,39%
FIMEBAP	32.739,47	877,57	4,76%



FMI`s Comparativo por Nivel de Activos 2020 Vs. 2019					
#	FMI	CIUDAD	2020	2019	Var. %
1	FONDOSURA	MEDELLIN	\$ 174.829	\$ 171.475	1,96%
2	FIMBRA	BOGOTA	\$ 85.435	\$ 80.011	6,78%
3	FONAL	MEDELLIN	\$ 69.333	\$ 71.980	-3,68%
4	FUTURO	MEDELLIN	\$ 63.762	\$ 61.581	3,54%
5	COMPENSAR	BOGOTA	\$ 59.224	\$ 53.405	10,90%
6	FONBYH	BOGOTA	\$ 47.218	\$ 41.451	13,91%
7	FIMOC	BOGOTA	\$ 41.518	\$ 39.348	5,52%
8	FAMISANCELA	MEDELLIN	\$ 37.661	\$ 33.871	11,19%
9	FAVIM	BARRANQUILLA	\$ 34.191	\$ 29.702	15,11%
10	FIMEBAP	BOGOTA	\$ 32.739	\$ 31.094	5,29%
11	PETROCAJA	BOGOTA	\$ 29.885	\$ 40.584	-26,36%
12	FIA	CALI	\$ 29.039	\$ 24.298	19,51%
13	FOMUNE	MEDELLIN	\$ 27.260	\$ 26.169	4,17%
14	CRC	CALI	\$ 25.693	\$ 21.967	16,96%
15	FONNOEL	MEDELLIN	\$ 23.967	\$ 22.762	5,29%
16	FOMIHOCOL	BOGOTA	\$ 22.311	\$ 18.282	22,04%
17	FOMIL	MEDELLIN	\$ 20.508	\$ 19.608	4,59%
18	PETROMECL	BOGOTA	\$ 19.903	\$ 17.779	11,95%
19	COMPARTIR	BOGOTA	\$ 18.650	\$ 16.233	14,89%
20	DESTINAR	BOGOTA	\$ 17.709	\$ 19.293	-8,21%
21	MI FUTURO	CALI	\$ 16.357	\$ 14.644	11,69%
22	FECOM	BOGOTA	\$ 14.929	\$ 13.970	6,86%
23	COLMOTORES	BOGOTA	\$ 14.269	\$ 17.305	-17,55%
24	FONCARNICOS	MEDELLIN	\$ 12.297	\$ 11.292	8,91%
26	FONCOLTABACO	MEDELLIN	\$ 11.514	\$ 14.765	-22,02%
25	ESTELAR	CALI	\$ 11.418	\$ 12.515	-8,76%
27	FONDOBANTEQ	BOGOTA	\$ 10.395	\$ 8.720	19,21%
28	FIMPREVI	BOGOTA	\$ 9.637	\$ 7.684	25,42%
29	FONAMERICAS	MEDELLIN	\$ 7.793	\$ 6.931	12,43%
30	FINDAHORRO	BOGOTA	\$ 7.625	\$ 6.977	9,29%
31	FONBOLSA	MEDELLIN	\$ 5.957	\$ 4.199	41,88%
32	FOMULEG	BOGOTA	\$ 5.737	\$ 5.575	2,91%
33	UNIFONDO	BOGOTA	\$ 5.576	\$ 5.356	4,10%
34	FONCCOMED	MEDELLIN	\$ 5.428	\$ 4.871	11,42%
35	AVANZAR	MEDELLIN	\$ 5.056	\$ 4.751	6,42%
36	INVERLOC	BOGOTA	\$ 4.845	\$ 4.222	14,75%
37	COCA - COLA	BOGOTA	\$ 4.839	\$ 3.913	23,65%

FMI's Comparativo por Rentabilidad en Activos 2020 Vs. 2019								
#	FMI	CIUDAD	Rentabilidad T.P.			Rentabilidad E.A		
			2020	2019	Var.	2020	2019	Var.
1	FAVIM	BARRANQUILLA	6,50%	1,50%	332,59%	11,39%	2,59%	340,21%
2	FIMPREVI	BOGOTA	5,87%	3,32%	77,12%	10,28%	5,75%	78,70%
3	FIA	CALI	4,71%	4,44%	6,28%	8,22%	7,72%	6,38%
4	FONAMERICAS	MEDELLIN	4,12%	6,54%	-36,91%	7,17%	11,47%	-37,44%
5	PETROMECL	BOGOTA	4,07%	3,33%	22,16%	7,08%	5,78%	22,48%
6	FONBYH	BOGOTA	3,89%	4,30%	-9,53%	6,77%	7,49%	-9,66%
7	COMPENSAR	BOGOTA	3,82%	4,29%	-10,85%	6,64%	7,46%	-11,00%
8	FONDOBANTEQ	BOGOTA	3,72%	3,30%	12,80%	6,46%	5,72%	12,97%
9	MI FUTURO	CALI	3,60%	5,92%	-39,23%	6,25%	10,37%	-39,72%
10	INVERLOC	BOGOTA	3,36%	2,36%	42,33%	5,82%	4,08%	42,83%
11	FIMOC	BOGOTA	3,31%	3,72%	-10,82%	5,75%	6,45%	-10,95%
12	FOMIHOCOL	BOGOTA	3,29%	2,71%	21,61%	5,71%	4,68%	21,87%
13	CRC	CALI	3,29%	3,25%	1,27%	5,71%	5,63%	1,28%
14	FIMBRA	BOGOTA	3,19%	0,81%	294,28%	5,52%	1,39%	297,60%
15	FECOM	BOGOTA	3,07%	2,35%	30,71%	5,32%	4,06%	31,05%
16	COLMOTORES	BOGOTA	2,99%	4,43%	-32,48%	5,18%	7,71%	-32,82%
17	PETROCAJA	BOGOTA	2,84%	3,41%	-16,63%	4,93%	5,92%	-16,80%
18	FIMEBAP	BOGOTA	2,75%	2,94%	-6,63%	4,76%	5,10%	-6,69%
19	FINDAHORRO	BOGOTA	2,36%	3,58%	-33,96%	4,08%	6,21%	-34,24%
20	UNIFONDO	BOGOTA	1,68%	1,21%	39,03%	2,90%	2,08%	39,26%
21	FAMISANCELA	MEDELLIN	1,55%	4,91%	-68,38%	2,68%	8,56%	-68,75%
22	COMPARTIR	BOGOTA	1,43%	3,94%	-63,81%	2,46%	6,86%	-64,13%
23	FOMULEG	BOGOTA	1,20%	1,59%	-24,64%	2,06%	2,74%	-24,75%
24	FONBOLSA	BOGOTA	0,50%	0,56%	-10,91%	0,86%	0,96%	-10,93%
25	ESTELAR	CALI	0,48%	4,52%	-89,48%	0,82%	7,87%	-89,62%
26	COCA - COLA	BOGOTA	0,44%	0,35%	25,31%	0,75%	0,60%	25,35%
27	DESTINAR	BOGOTA	0,08%	-0,41%	-119,96%	0,14%	-0,71%	-120,00%
28	FONCCOMED	MEDELLIN	-0,61%	5,27%	-111,61%	-1,05%	9,20%	-111,37%
29	FUTURO	MEDELLIN	-0,81%	5,90%	-113,69%	-1,38%	10,32%	-113,37%
30	FONNOEL	MEDELLIN	-1,39%	1,77%	-178,72%	-2,37%	3,05%	-177,84%
31	FONCARNICOS	MEDELLIN	-1,40%	1,69%	-183,05%	-2,39%	2,91%	-182,14%
32	FOMIL	MEDELLIN	-1,67%	5,03%	-133,08%	-2,84%	8,79%	-132,30%
33	FONCOLTABACO	MEDELLIN	-3,21%	4,43%	-172,36%	-5,43%	7,72%	-170,42%
34	FOMUNE	MEDELLIN	-6,29%	7,17%	-187,73%	-10,54%	12,61%	-183,62%
35	FONDOSURA	MEDELLIN	-9,38%	6,81%	-237,78%	-15,54%	11,96%	-229,98%
36	FONAL	MEDELLIN	-10,31%	7,81%	-232,00%	-17,01%	13,76%	-223,67%
37	AVANZAR	MEDELLIN	-10,56%	5,97%	-276,76%	-17,41%	10,46%	-266,50%

Comparativo Junio Vs. Julio 2020

FONDOS	CIUDAD	JUNIO			JULIO			Var Rent mes	Var Activos mes
		ACTIVO	RENT ACUM	% ea	ACTIVO	RENT ACUM	% ea		
FONBYH	BOGOTA	\$ 45.361	1220,7	5,45%	\$ 47.218	1725,76	6,35%	41,37%	4,09%
FONCARNICOS	MEDELLIN	\$ 11.850	-404,31	-6,71%	\$ 12.297	-165,11	-2,29%	59,16%	3,77%
FONNOEL	MEDELLIN	\$ 23.121	-782,58	-6,66%	\$ 23.967	-324,66	-2,31%	58,51%	3,66%
FONCCOMED	MEDELLIN	\$ 5.271	-101	-3,80%	\$ 5.428	-31,5	-0,99%	68,81%	2,98%
FONCOLTABACO	MEDELLIN	\$ 11.185	-525,39	-9,17%	\$ 11.514	-421,4	-6,19%	19,79%	2,95%
INVERLOC	BOGOTA	\$ 4.708	109,05	4,69%	\$ 4.845	152,17	5,44%	39,54%	2,91%
FONDOSURA	MEDELLIN	\$ 169.927	-19038,55	-21,15%	\$ 174.829	-16248,16	-15,40%	14,66%	2,88%
COCA - COLA	BOGOTA	\$ 4.704	73,7	3,16%	\$ 4.839	19,15	0,68%	-74,02%	2,87%
FONBOLSA	BOGOTA	\$ 5.797	71,67	2,49%	\$ 5.957	25,35	0,73%	-64,63%	2,77%
AVANZAR	MEDELLIN	\$ 4.923	-619,1	-23,57%	\$ 5.056	-517,67	-16,90%	16,38%	2,70%
FIMPREVI	BOGOTA	\$ 9.390	392,3	8,53%	\$ 9.637	508,54	9,22%	29,63%	2,62%
FOMIHOCOL	BOGOTA	\$ 21.786	558,94	5,20%	\$ 22.311	667,98	5,19%	19,51%	2,41%
FOMUNE	MEDELLIN	\$ 26.627	-2080,46	-15,02%	\$ 27.260	-1680,84	-10,34%	19,21%	2,38%
FAVIM	BARRANQUILLA	\$ 33.453	1653,68843	10,13%	\$ 34.191	2075,36	10,63%	25,50%	2,21%
FECOM	BOGOTA	\$ 14.639	366,3	5,07%	\$ 14.929	443,79	5,15%	21,15%	1,98%
FONAL	MEDELLIN	\$ 68.015	-8243,48	-22,77%	\$ 69.333	-7282,49	-17,32%	11,66%	1,94%
CRC	CALI	\$ 25.228	625,56	5,02%	\$ 25.693	783,99	5,29%	25,33%	1,84%
FIMBRA	BOGOTA	\$ 83.953	1546,46	3,72%	\$ 85.435	2635,6	5,35%	70,43%	1,76%
FOMIL	MEDELLIN	\$ 20.160	-668,11	-6,52%	\$ 20.508	-334,06	-2,78%	50,00%	1,72%
FIMOC	BOGOTA	\$ 40.848	932,31	4,62%	\$ 41.518	1339,61	5,59%	43,69%	1,64%
FIA	CALI	\$ 28.574	933,74	6,64%	\$ 29.039	1257,28	7,54%	34,65%	1,63%
FAMISANCELA	MEDELLIN	\$ 37.079	163,9	0,89%	\$ 37.661	555,21	2,54%	238,75%	1,57%
COLMOTORES	BOGOTA	\$ 14.066	332,98	4,79%	\$ 14.269	471,71	5,73%	41,66%	1,44%
MI FUTURO	CALI	\$ 16.126	387,27	4,86%	\$ 16.357	557,79	5,92%	44,03%	1,43%
FINDAHORRO	BOGOTA	\$ 7.543	158,14	4,24%	\$ 7.625	172,45	3,91%	9,05%	1,09%
FOMULEG	BOGOTA	\$ 5.676	55,18	1,95%	\$ 5.737	67,8	2,03%	22,87%	1,06%
COMPARTIR	BOGOTA	\$ 18.471	131,63	1,43%	\$ 18.650	248,98	2,30%	89,15%	0,97%
FONAMERICAS	MEDELLIN	\$ 7.747	245,56	6,44%	\$ 7.793	303,59	6,77%	23,63%	0,59%
COMPENSAR	BOGOTA	\$ 58.890	1736,94	5,99%	\$ 59.224	2151,55	6,31%	23,87%	0,57%
PETROMECL	BOGOTA	\$ 19.813	583,07	5,97%	\$ 19.903	766,87	6,70%	31,52%	0,46%
UNIFONDO	BOGOTA	\$ 5.557	84,99	3,08%	\$ 5.576	91,87	2,84%	8,10%	0,34%
PETROCAJA	BOGOTA	\$ 29.792	844,58	5,75%	\$ 29.885	1002,4	5,82%	18,69%	0,31%
DESTINAR	BOGOTA	\$ 17.687	-135,44	-1,53%	\$ 17.709	15,32	0,15%	111,31%	0,12%
FIMEBAP	BOGOTA	\$ 32.763	723	4,46%	\$ 32.739	877,57	4,64%	21,38%	-0,07%
FONDOBANTEQ	BOGOTA	\$ 10.466	311,13	6,03%	\$ 10.395	355,29	5,93%	14,19%	-0,68%
FUTURO	MEDELLIN	\$ 65.048	-1097,07	-3,34%	\$ 63.762	-505,83	-1,36%	53,89%	-1,98%
ESTELAR	CALI	\$ 11.802	-47,56	-0,80%	\$ 11.418	56,94	0,86%	219,72%	-3,25%